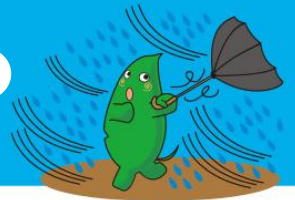


Flood and Storm Preparedness for Your Home



Concentrated Heavy Rain or Typhoon

Localized downpours bring heavy rain in a short time to limited areas, causing rapid river rising. Urban flooding, such as street flooding and house inundation, may also occur. A typhoon brings heavy rain and windstorms which can cause life-threatening floods or



Inland water inundation

Inland flooding occurs when heavy rain overwhelms drainage systems, causing water to overflow and flood roads, land, and buildings.



Evacuate early and take safe action!

Typhoons and localized downpours can bring strong winds and heavy rain, leading to various hazards such as home inundation, river flooding, and landslides. Check hazard areas in advance on maps (e.g., “flood/inland inundation zones” and “special landslide warning zones”), and be prepared to evacuate early and take appropriate action when danger approaches.

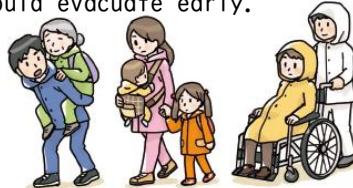
Check the latest updates regularly

When a typhoon or sudden heavy rain occurs, get accurate information—such as storm tracks and impact forecasts—from TV, radio, and the internet. Also, prepare for evacuation in advance.



Evacuate before flooding starts

Be alert if heavy or prolonged rain is occurring in your area or upstream of nearby rivers. Those who may need more time to evacuate—especially older adults and people with disabilities—should evacuate early.



Evacuate before it gets dark

When heavy rain is expected, evacuate while it is still light outside. Even during the day, flooded roads are dangerous because the depth is hard to judge and manhole or drain covers may be missing. Use an umbrella or a stick to check the ground as you walk.



Evacuation information during disasters (From Meteorological Agency and Yamato)

It's important to know when to start evacuating. When wind and flood damage are predicted, evacuation information is announced according to the alert levels below. Stay informed of the evacuation information and act as necessary to protect yourself.

People who may need extra time to evacuate (elderly, disabled, expectant mothers and those with infants) should evacuate early.

If danger is expected, do not wait for evacuation orders. Evacuate on your own judgement.

Disaster Level	Alert	Disaster status and Evacuation Information		Evacuation Step for Residents	
High Level of Disaster ↓ Low	5	Disaster occurrence/impending	Yamato City	Emergency Safety Measures	Life threatening danger—seek safety now!
	<Be sure to evacuate by Alert Level 4!>				
	4	High risk of disaster	Yamato City	Evacuation Instruction	Evacuate from all dangerous areas
	3	Risk of disaster	Yamato City	Evacuation of the Elderly, etc.	People who need more time should evacuate early. Others should prepare to evacuate.
	2	Weather worsening	Meteorological Agency	Heavy Rain, Flood, or Storm Surge Advisories	Check your evacuation plan (evacuation sites, routes, and timing).
1	Risk of weather worsening	Meteorological Agency	Probability Warnings	Be prepared for disasters	



Scan the QR code for the latest evacuation updates.

