



大和市

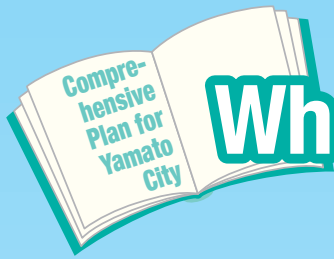
～“MINNA GA TSUNAGARU KENKO TOSHI” YAMATO～

The 10th Comprehensive Plan for Yamato City

Apr. 2025 - Mar. 2034

Digest Version





What is the Comprehensive Plan?

This plan outlines Yamato City's vision for the future and the steps needed to achieve it. It serves as a tool for sharing ideas and fostering collaboration with our citizens to bring this vision to life.

I see.
So, what kind of place are we aiming to be?



We believe that being “KENKO,” meaning the care of both physical and mental well-being, is key to building a happy and healthy community. Our vision for the future is...

Ideal Future City “MINNA GA TSUNAGARU KENKO TOSHI” Yamato

※MINNA GA TSUNAGARU・・・This phrase represents the concept of fostering connections—between individuals, among people, and within the community.

※KENKO TOSHI・・・A city where citizens can live healthy lives and feel happy.

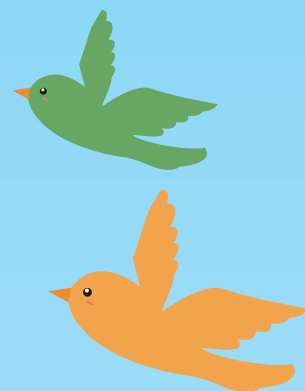


Here is our ideal future city!

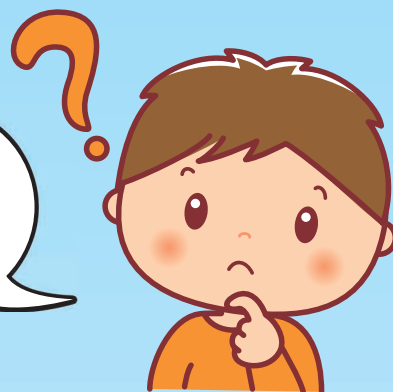




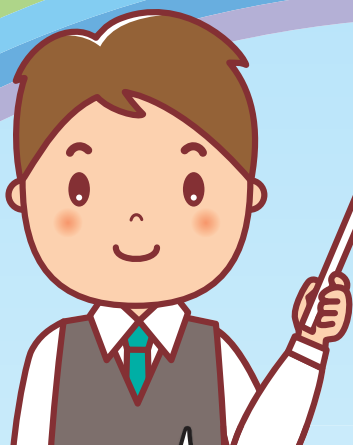
I love the word “KENKO”!
I want to be happy, too!



What do you mean by
“MINNA GA TSUNAGARU”?



What brings happiness is different for everyone,
but people who have positive relationships with
family and friends are often happier. That’s why
Yamato City is focusing on helping citizens
strengthen those connections.



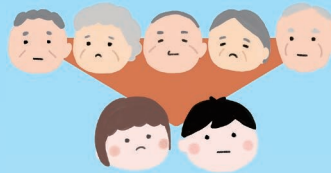
We also know that to achieve this goal, there will
be many challenges. So let’s think about these
challenges from different perspectives and explore
ways to overcome them together!





Perspectives on Community Development

Our society faces many challenges, including a declining birthrate, an aging population, global warming, and large-scale natural disasters. To address these complex issues, we are pursuing solutions from nine distinct perspectives, aiming to create a sustainable and thriving community for all.



Declining Birthrate and Aging Population



Global warming

etc.

P

Perspectives on Community Development

Creating a Community That Fosters Happiness and Well-Being

Establishing a Sustainable and Comfortable Community

Adapting to an Aging Society

Advancing Community Revitalization

Building a Community Where Children Can Grow and Thrive


Developing a Community That People Are Proud to Call Home

Ensuring a Safe and Secure Living Environment

Addressing Issues Related to Navy Air Facility Atsugi

Achieving Sustainable Municipal Management

7 Objectives and Municipal Management Policies to Achieve Ideal Future City



Now, let's look at the seven objectives that Yamato City has in order to achieve our goal of "MINNA GA TSUNAGARU KENKO TOSHI YAMATO".

Sounds good!

Objectives to Achieve Ideal Future City

Creating Connection

Objective 1

A Community Where Everyone Can Stay Healthy and Active for Life

《Policy Areas》

Health Promotion and Wellness, Medical Services, Sports and Physical Activities, Lifelong Learning, Culture and the Arts



Objective 2

A City That Empowers Children for a Brighter Future

《Policy Areas》

Children and Youth, School Education



NEXT

Objectives 1 to 5 are closely related to creating connections.



Objectives to Achieve Ideal Future City

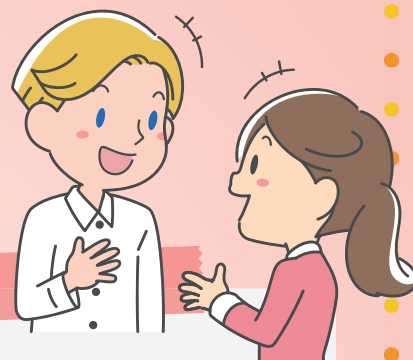
Creating Connection

Objective 3

A City Where Everyone Supports One Another

《Policy Areas》

Community Welfare, Elderly Welfare, Disability Welfare, Social Insurance and Public Assistance



Objective 4

A City with Deep Community Bonds That Embraces Diversity

《Policy Areas》

Community Activities, Civic Engagement, Human Rights and Gender Equality, Multicultural Harmony, Peace

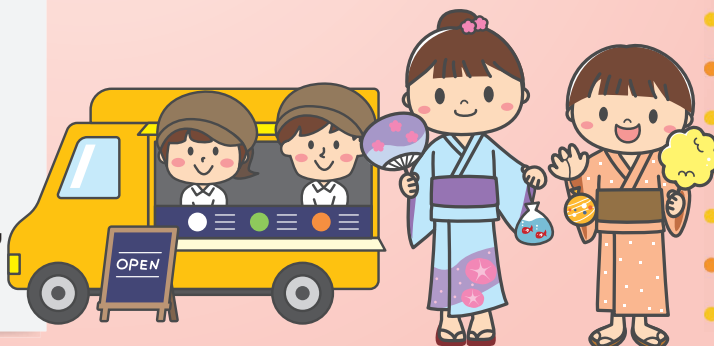
There are so many areas involved!

Objective 5

A City That Generates Vibrancy

《Policy Areas》

Commerce and Industry, Agriculture, Events and Tourism



Objectives to Achieve Ideal Future City

Building an Environment That Encourages Connection

Objective 6

A Safe City Where Everyone Can Live with Peace of Mind

《Policy Areas》

Disaster Preparedness, Public Safety (Crime Prevention, Citizen Support, Traffic Safety, Firefighting), Safety Measures for Navy Air Facility Atsugi



Objective 7

A City with People and Environment-Friendly Urban Spaces

《Policy Areas》

Environmental Conservation, Urban Environmental Development



I see Objectives 6 and 7 are closely tied to building an environment that fosters connections!

Next, let's take a look at Yamato City's approach and perspectives for advancing these efforts!

Yes!
I would love to!

Administrative Management Policies

Common Principles

- Reflecting Citizens' Voices
- Promoting Various Forms of Collaboration
- Utilizing Digital Technologies and Other Innovations



Basic Policy 1

Administrative Management Open to Citizens

《Specific Policies》

- Information Collection and Analysis for Effective City Governance
- Clear and Accessible Information Sharing for Citizens
- Project Management Through Goal Setting

Basic Policy 2

Administrative Management Adaptable to Change

《Specific Policies》

- Sustainable Fiscal Management
- Functional and Resilient Organizational Operations
- Appropriate Management of Public Facilities and Public Assets

Basic Policy 3

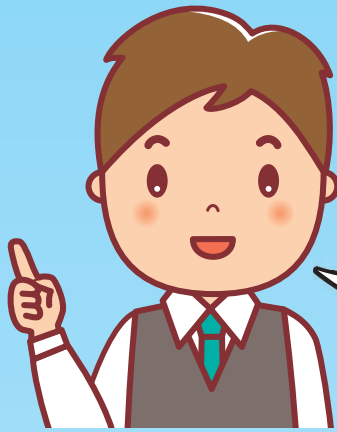
Administrative Management Where Everyone Can Thrive

《Specific Policies》

- Recruitment with a Long-Term Perspective
- Development of Employee Skills
- Creating a Workplace Environment that Enhances Employee Motivation

It's great that our opinions will be reflected in community development!





Do you understand all the kinds of effort that Yamato City is making?



Yes!
With achievement of each objective, we can imagine our city becoming a place where everyone feels truly happy!



To achieve these goals, it's important for everyone involved to work together.
Each person should contribute in their own way to help make our city a better and more comfortable place.



I'll start by doing what I can!
Let's make our city a place where everyone can live happily!



Yamato City: Key Characteristics and Data

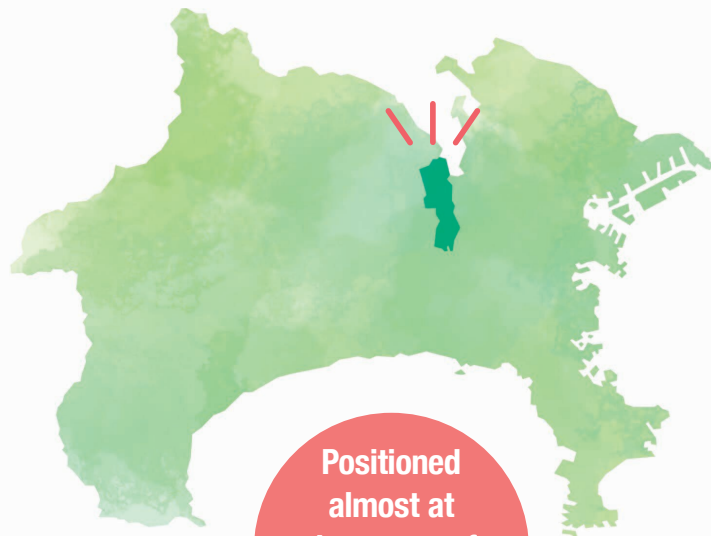
(Data as of Oct 1, 2024)

Area: 27.09 km²

Population: 245,468
(Male: 122,330, Female: 123,138)

Households: 122,368

※Population and household numbers are based on the Basic Resident Ledger



Positioned almost at the center of Kanagawa Prefecture.

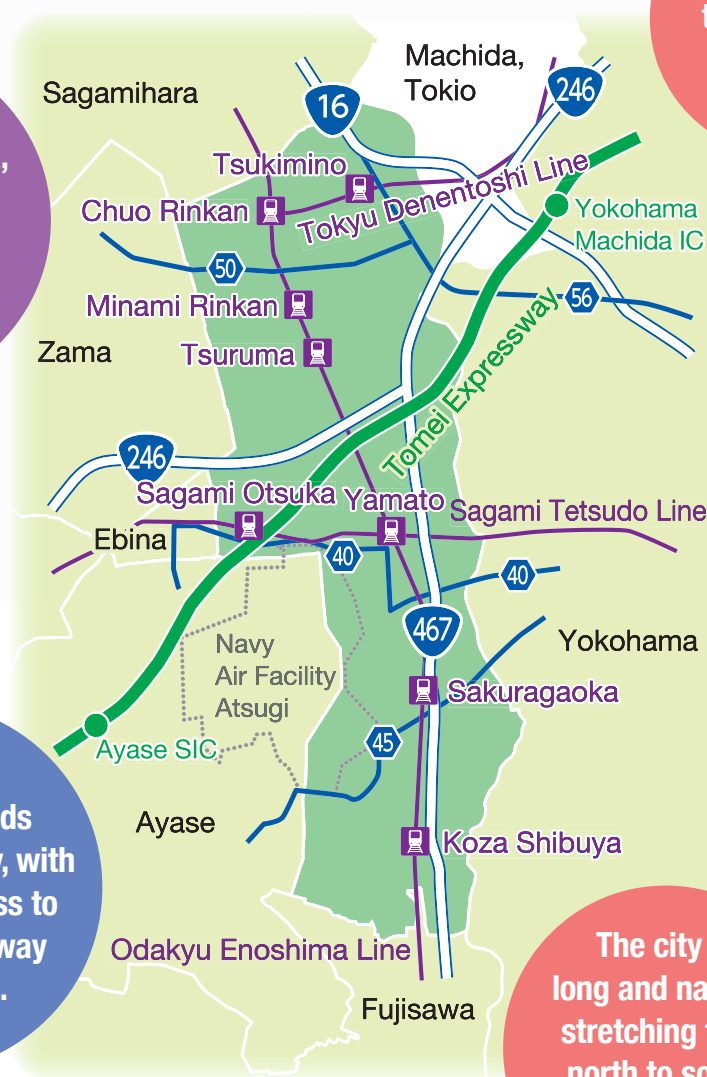
It borders the cities of Yokohama, Sagami-hara, Fujisawa, Ebina, Zama, Ayase, and Machida.

Located within 40 kilometers from central Tokyo.

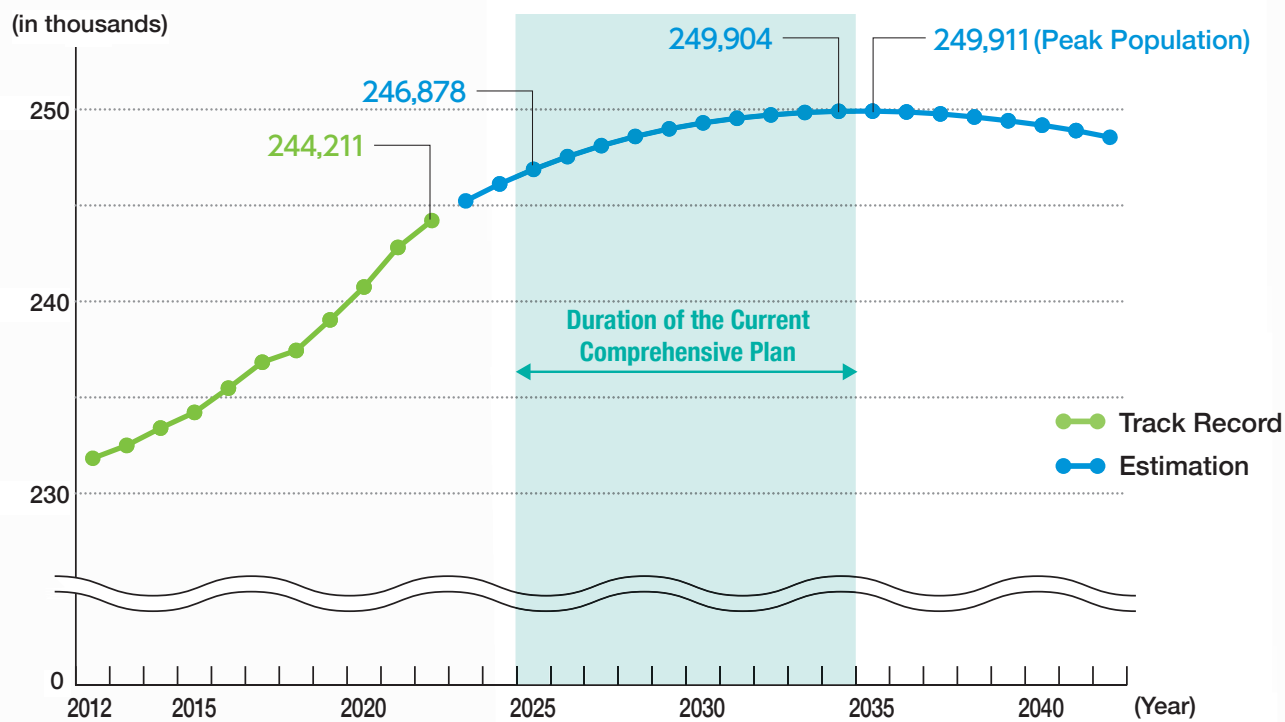
National and prefectural roads crisscross the city, with convenient access to nearby expressway interchanges.

The city has eight train stations, and most areas are within a 15-minute walk to a station.

The city is long and narrow, stretching from north to south, with minimal hilly terrain.

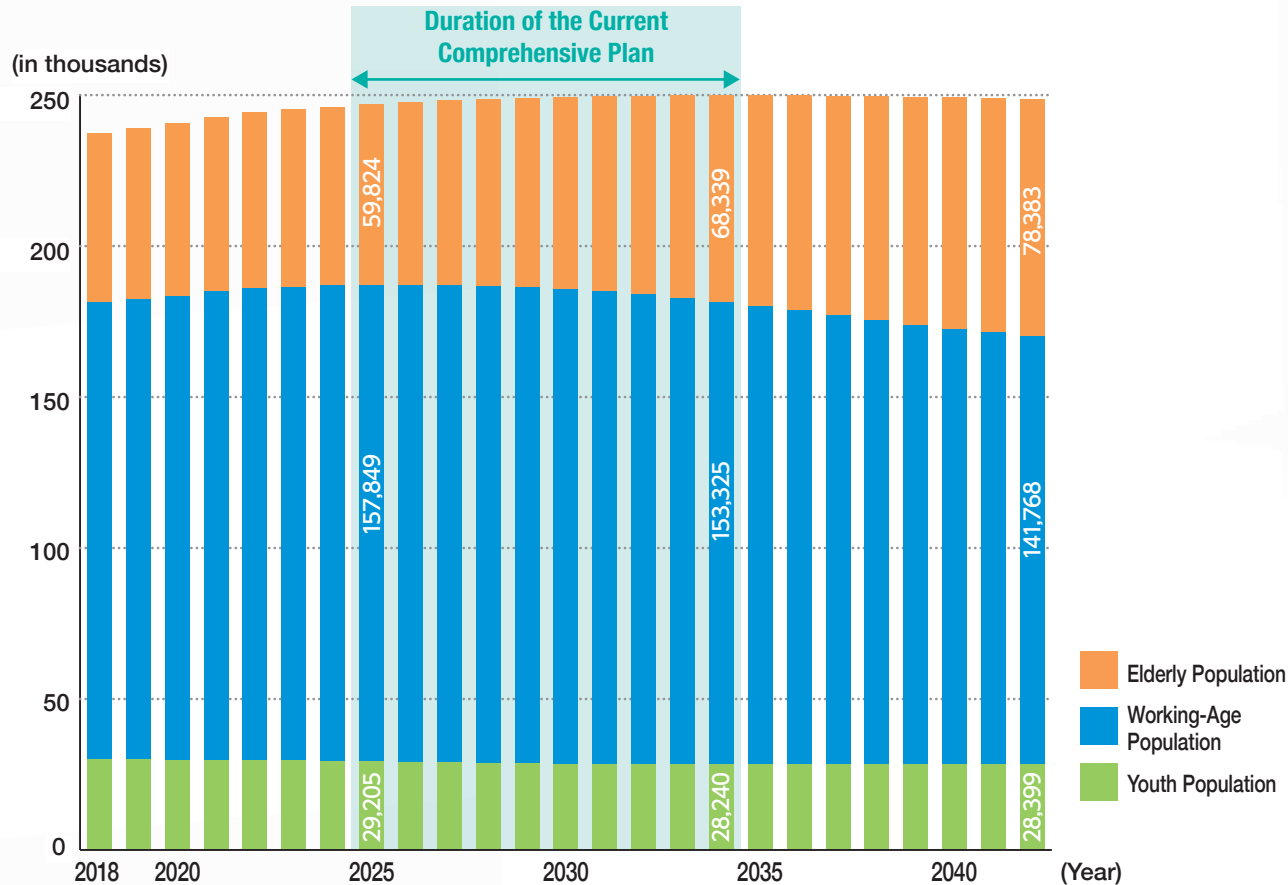


Population Projections (As of October 1 of Each Year)



Source: Yamato City Projections

Population Projections for Three Age Groups (As of October 1 of Each Year)



Source: Yamato City Projections

The 10th Comprehensive Plan for Yamato City

Apr. 2025 - Mar. 2034

Digest Version

Published in February, 2025

Editing and Publishing:

Yamato City

1-1-1 Shimotsuruma, Yamato-shi, 242-8601

TEL 046-263-1111

<https://www.city.yamato.lg.jp>

